

RESTORATION WORKS TO THE SCULPTURAL  
ENSEMBLE BY JOSEPH WILTON, LADY  
ANNE DAWSON TEMPLE, DARTREY  
ESTATE, CO. MONAGHAN

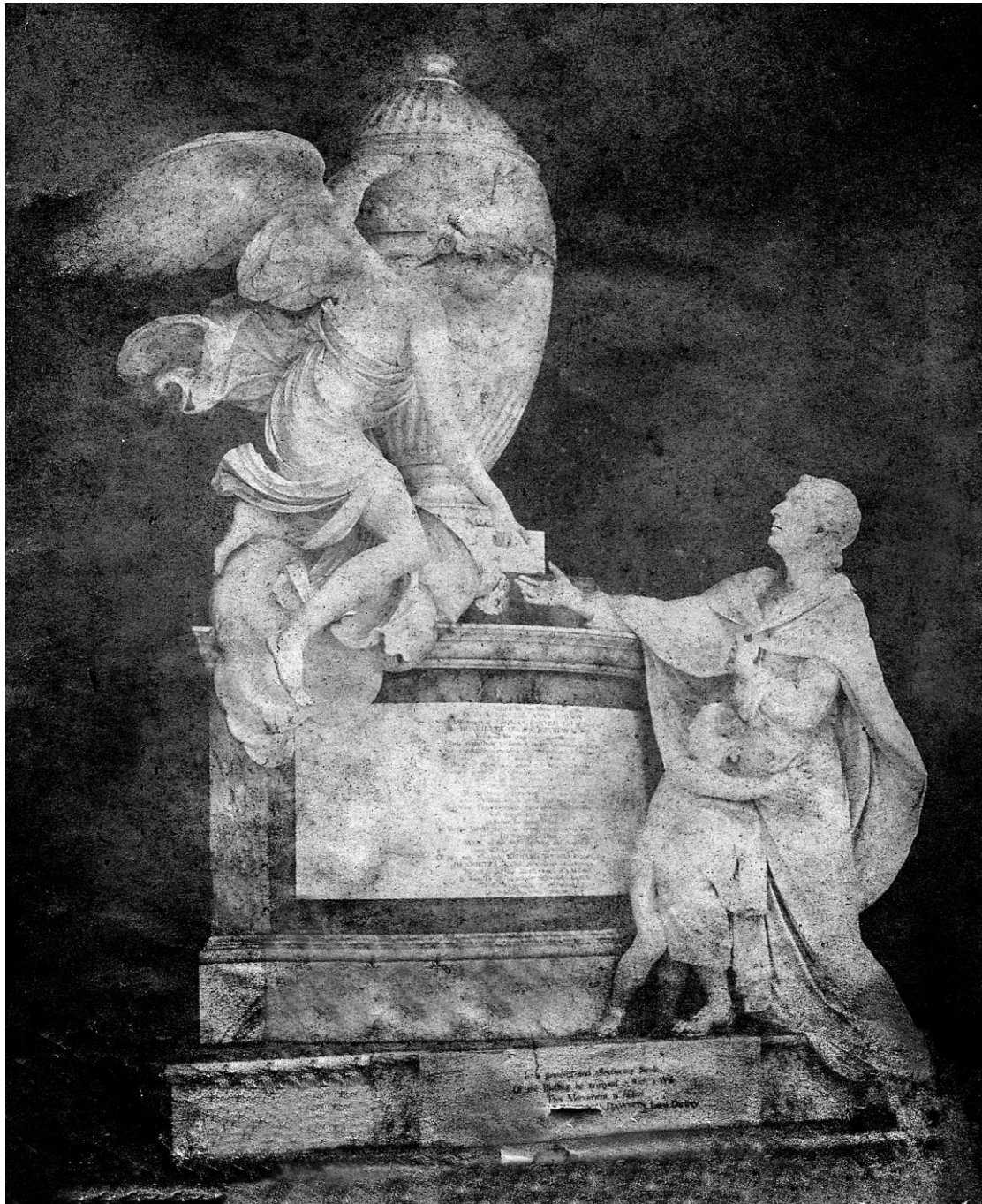


Fig. 1. Earliest existing photograph of the sculpture  
(taken *circa* 1915).



Fig. 2. Torso of Lord Dartrey and child, prior to works.

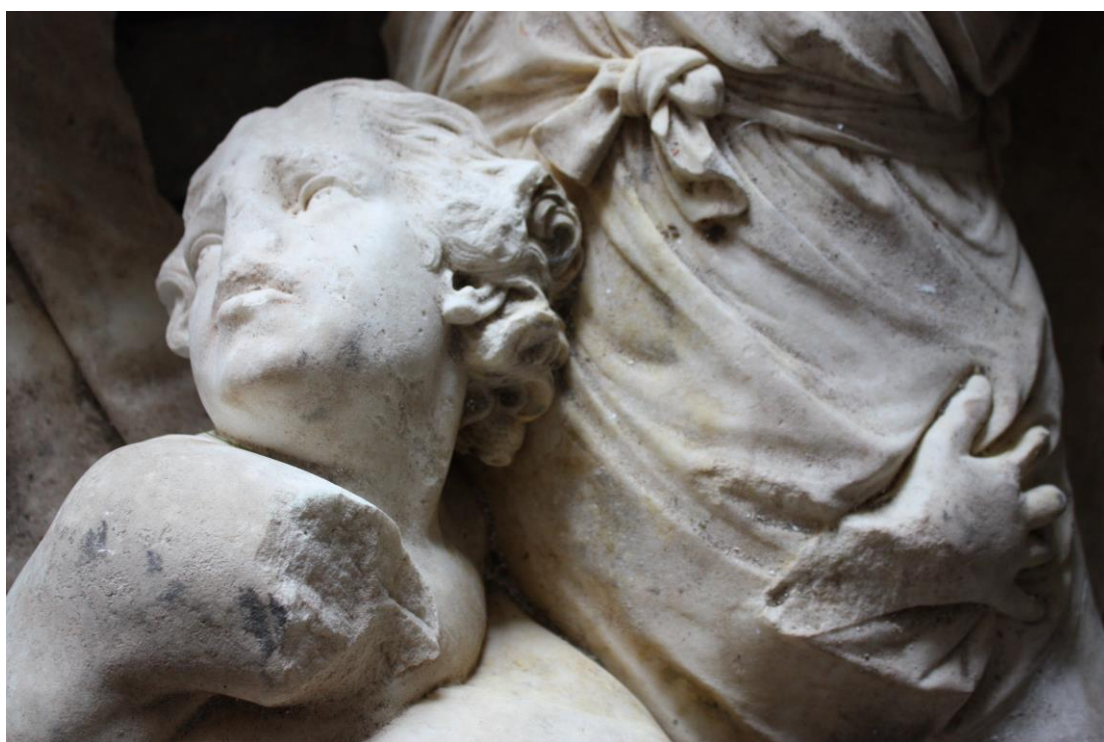


Fig. 3. Detail of child, prior to works.





Fig. 4. Detail of child after being salvaged from the rubble of the Temple, amongst which it had lain exposed to the elements for several decades.



Fig. 5. The angel, prior to works.





Fig. 6. The angel, prior to works.



Fig. 7. The sculptural ensemble, after works.





Fig. 8. The sculptural ensemble, after works.



Fig. 9. Detail of Lord Dartrey, after works.





Fig. 10. Nicola De Silvestri models *in situ* a replacement wing section in clay, using the only other available photograph taken (*circa* 1963) before the sculpture was badly vandalised in the 1970s.



Fig. 11. Nicola working on one of his plaster casts of a missing section of wing in the workshop in Beara, Co. Cork.



Fig. 12. The replacement plaster casts prior to installation.





Figs. 13 & 14. The sculpture awaits reinstallation upon its return to the Temple from Co. Cork.

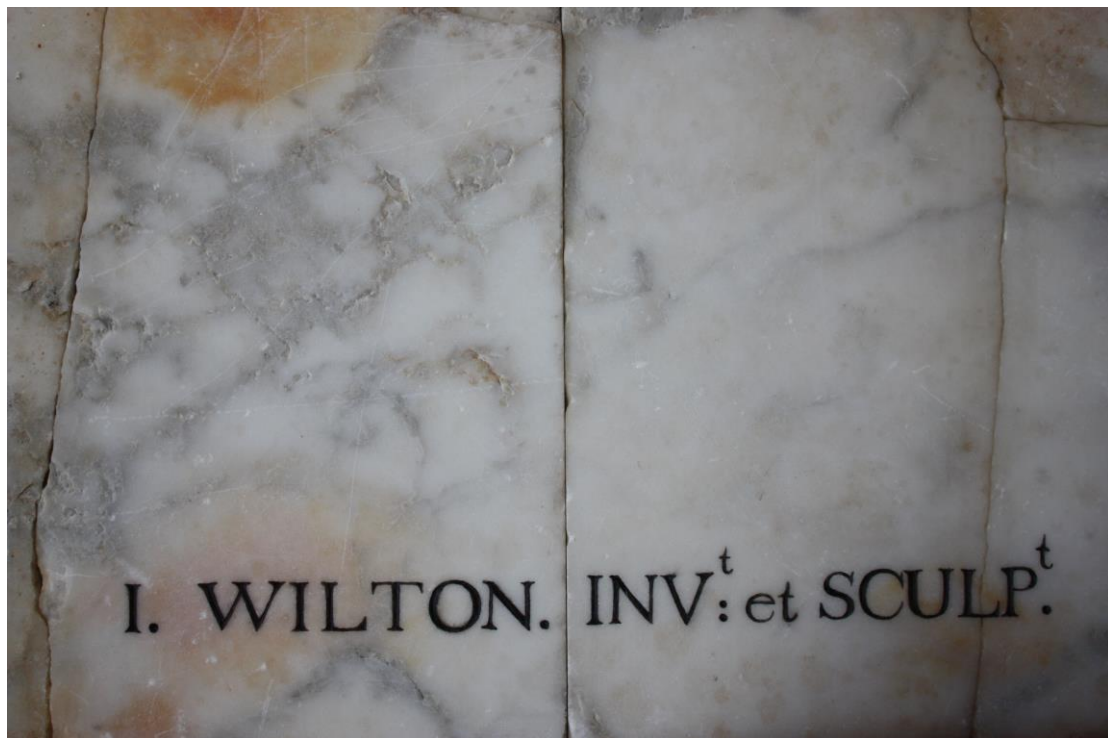


Fig. 15. The angel, ready for lifting back into position.





Fig. 16. Post-reinstallation works.



This restoration could not have been carried out without  
the invaluable input and support of:

Nicola De Silvestri (Carrara, Italy), Jason Ellis, Noel Carney,  
Andrew McCaul, Bertie Mills, Finbarr Harrington ('Caupey')  
and the Dartrey Heritage Association.

© Eoghan Daltun, sculpture conservator, 2015.